

BILL OF QUANTITIES FOR ADDITION, ALTERATION & RENOVATION OF HEALTH CENTRE AT NATIONAL INSTITUTE OF TECHNOLOGY, ROURKELA, ORISSA.						
Sl. No.	Item Description	Qty	Unit	Rate	Rate	Amount
				in figures	in words	
A	DISMENTLING WORKS					
1	Dismenling cement concrete manually / by mechanical means including disposal of material within 50 mtr lead as per direction of Engineer in charge.					
1.1	1:3:6 or richer mix.	2	Cum			
2	Demolishing RCC work manually / by mechanically means including stacking of steel bars and disposal of unservicable material within 50mtr lead as per the direction of Engineer in charge.	3	Cum			
3	Demolishing brick work manually / by mechanically means including stacking of servicable material & disposal of unservicable material within 50mtr lead as per the direction of Engineer in charge.					
3.1	in cement mortar	5	Cum			
4	Dismentling doors, windows, and clerestory windows (steel or window) shutter including chowkath , architrave , holdfast etc, complete and stacking within 50mtr lead:					
4.1	of area 3 sq. mtr	13	Each			
4.2	of area beyond 3 sq. mtr	6	Each			
5	Dismentling steel work in builtup sections in angles, tees . Flats and channels including all gusset plate , bolts, nuts, cutting rivets, welding etc. including dismembering and stacking within 50mtr lead. (Collapsible gate)	600	Kg			
6	Dismentling old plaster or skirting raking out joints and cleaning the surface for plaster including disposal of rubbish to the dumping ground within 50mtr lead.	205	Sqm			
7	Dismentling flushing cistern of any size including stacking of useful material near the site and disposal of unservicable material within 50mtr lead.	4	Each			

No of corrections:-
No of overwrittings:-

Signature of Bidder

Sign of P-I-C.

Sl. No.	Item Description	Qty	Unit	Rate in figures	Rate in words	Amount
8	Dismantling of tile work in dado/ floor of toilet including removal of base course , disposal of debris from site with lead of 50mtr.	70	Sqm			
9	Dismantling of cement concrete jally including disposal of debris from site with lead of 50mtr.	5	Sqm			
	TOTAL OF SECTION- A				Rs	
	carried over to the " Abstract"					
B	GENERAL BUILDING WORKS					
1	Surface dressing of the ground including removing vegetation and inequalities not exceeding 15cm depth and disposal of rubbish , lead upto 50mtr & lift upto 1.5 mtr.In all kinds of soil	30	100Sqm			
2	Earth work in excavation in all type of soil , morrum, hard, compacted or soft rock, mica schist quartz etc. in foundation of structure, sewer line, drain pits, etc. to required level and grade and dressing complete as per the specification and direction of the engineers in both dry and wet condition including necessary pumping, bailing out of water, slush removal etc. and transporting the excavated material to soil dump /fill area/ excavated pit with a lead of 200mtr. at all heights and descent including dozing leveling at site of filing all as directed by the engineer, all tools,plants, and labour complete, Authorised working space benching and sick slope for the excavation will be measured and paid under this items upto 1.50 mtr depth below finished Ground Level.	65	Cum			
3	Earth work in excavation in foundation trenches in Ordinary rocks i.e. Disintegrated rock (blasting prohibited) by crowbar, pick axe etc. within initial lift 3.00 mt , rough dressing to the sides of trench , getting out the excavated rock & disposal of surplus excavated material within 200 mtr of lead including cost of dewatering, shoring, labour, T & P, tax etc.complete in all respect as per the direction of the Engineer .-in-charge.	18	Cum			

No of corrections:-
No of overwrittings:-

Signature of Bidder

Sign of P-I-C.

Sl. No.	Item Description	Qty	Unit	Rate in figures	Rate in words	Amount
4	Back filling in all positions and height and descent in foundation pits, pipe trench sewer line around foundation and structure in plinth etc. with approved excavated material obtained from a lead of 200mtr including reclaiming from spoils heaps at all height or reclaiming from dumps at all depth cost includes transporting, depositing, filling, in layers of 200mm thick dressing watering and ramming complete with tools , plant & labour.	55	Cum			
5	Supplying & filling in layers of 150mm thick good quality river sand including watering and consolidating by mechanical means as per direction of Engineer.	10	Cum			
6	Concrete work :- Supplying, laying and compacting plain cement concrete of following graded aggregate in all foundation, floor, roof screening etc. and at all heights and depth above and below finished ground level to required levels slope etc. including curing but excluding the cost of shuttering all as per drawing and direction of engineer, with all material, tools plant and labour.					
6.1	Below finished ground level 1:4:8 with 40mm down graded aggregate.	12	Cum			
6.2	Above finished ground level 1:4:8 with 40mm down graded aggregate.	11	Cum			
7	Providing, laying in position Reinforced cement concrete (1 : 1.25 : 2.5) for reinforced cement concrete work mixing, laying in position but excluding cost of centring, shuttering , reinforcement , as per the direction of Engineer in charge. all work upto floor V level.					
7.1	Below finished ground level concrete (1: 1.25:2.5) with 20mm down graded aggregate.	20	Cum			
7.2	Above finished ground level concrete (1: 1.25 : 2.5) with 20mm down graded aggregate.	96	Cum			

No of corrections:-
No of overwritings:-

Signature of Bidder

Sign of P-I-C.

Sl. No.	Item Description	Qty	Unit	Rate	Rate	Amount
				in figures	in words	
8	Form work:- Supplying and fixing ply and or steel shuttering for all type of RCC work at any location in provision with necessary centering, bracing proofing staging (if required) etc. and striking including curved shuttering fine and facia for all plain & reinforced cement concrete works including all chamfer splays, filler keys, wedges proof, mails bracing bracket, cutting holes for embedement etc. and applying waste oil on shuttering surface in contact with concrete all as per drg. and direction of engineer all tools plant and labour complete rate including providing and laying plastic sheet to make water tight shuttering and removing the same. for all type of RCC work.					
8.1	At all depth & any location below finished Ground Level	125	Sqm			
8.2	At all heights & any location above finished Ground Level	1050	Sqm			
9	Supplying , loading , unloading transporting , straightening, decoiling, cutting, bending,cranking, tack welding as necessary placing and fixing in position steel reinforcement including angle /pins provided for approved welded joints at all level above and below finished G.L. for RCC and precast RCC work including supplying approved 20 SW annealed black binding wire, covel block etc. including all as per drg. and direction of engineer all material,tools plants and labour complete.High yield strength deformed bars of Grade Fe 500 of all diameters of cold twisted steel / TMT of TATA/ SAIL.	16.5	M.T			

No of corrections:-
No of overwrittings:-

Signature of Bidder

Sign of P-I-C.

Sl. No.	Item Description	Qty	Unit	Rate	Rate	Amount
				in figures	in words	
10	Masonry work:- Supplying and construction brick work at any location using best quality locally available bricks of compressive strength not less than 75 Kg/ sqcm as defined in IS 1077 in cement sand mortar (1:6) in foundation, superstructure , main hole duct drain etc. including fiar cutting, wastage, bounding, plumbing line level, flushing , racking joint, scaffolding and curing all as per drg. and as per direction of the engineer with, all material tools plant, labour complete. all upto floor V level.					
10.1	At and all depth below finished ground level.	15	Cum			
10.2	At and all heights above finished ground level	129	Cum			
11	Brick work at any location in 1:4 cement mortar in half brick work wall with locally available bricks of compressive strength not less than 75 Kg / sqcm as defined in IS 1077 at any location including supplying and placing GI hexagonal wire mesh of 12mm x 22 gauge at every fourth layer.	33	Sqm			
12	Plinth protection:- Providing and making plinth protection with 1:4:8 (1 cement : 4 part sand : 8 part 40mm down size aggregate) complete with float finish 80mm thick with slope toward drain along the periphery of building and curing the same with all tools , plants and labour complete.	85	Sqm			

No of corrections:-
No of overwrittings:-

Signature of Bidder

Sign of P-I-C.

Sl. No.	Item Description	Qty	Unit	Rate in figures	Rate in words	Amount
13	Supplying, laying and fixing anti-skid tiles (Somany/Johnson/ Kajaria) in floors at all heights of (496mm x 496mm) size approved make to floor surface conforming to drawings and designs set in 20mm thick cement mortar of proportion 1:4 to proper line and plumb including cutting to required size and shape and fixing at corners etc. and the joints are to be properly finished with white cement with required pigment and curing complete with cost of all labour, materials, taxes, T&P, conveyance etc. as directed by the Engineer.	35	Sqm.			
14	Supplying & Fixing concrete designer's tile of ultra /eurocon make approved shade over 20mm thick cement mortar (1 cement : 4 coarse sand) including pointing the joints with white cement and matched pigment in ratio (1:1) complete in all respect including all material, labour, tool plant, tax, lead etc.as per the direction of Engineer in charge.	20	Sqm			
15	Providing & fixing ceramic glazed tile of Kajaria/somany/ Naveen make , confirming to IS :15622 of approved shade & quality to dado at all heights over a base course of 12mm thick cement mortar (1 cement : 3 coarse sand) / as per manufactures specification with white cement grouting with mixed matched pigment of approved manufacture etc. as specified & directed laid to required slope, cutting in required size to corners cost includes all labours, materials, T & P, lead, royalty, tax, curing etc. complete in all respects as per direction of Engineer .Basic cost of tile should not less than Rs 35.00/ sft	117	Sqm.			

No of corrections:-
No of overwrittings:-

Signature of Bidder

Sign of P-I-C.

Sl. No.	Item Description	Qty	Unit	Rate	Rate	Amount
				in figures	in words	
16	Supplying , fixing 18mm thick gang saw mirror polished (premoulded and prepolished) machine cut granite stone of any colour and shade, approved shade,colour & texture in flooring, stair tread ,landing,facias, corridore border or similar location etc. at any location of approved colour & at all heights with base course of cement mortar 20mm thick of proporation (1 cement : 4 coarse sand) with joints treated with white cement mixed with matched pigment , epoxy touch ups, including rubbing , curing , moulding and polishing to edge to give high gloss finish cost includes all labour, material, Tools plants ,curing etc. complete in all respects as per direction of Engineer.	38	Sqm			
17	Supplying , fixing 18mm thick mirror polished granite stone lining / cladding of any colour to stair riser of steps ,etc. at any location of approved colour & at all heights with base course of cement mortar 12mm thick of proporation (1 cement : 3 coarse sand) & cement slurry @ 3.3kg/sqm including pointing in white cement cost includes all labour, material, Tools plants ,curing etc. complete in all respects as per direction of Engineer.	15	Sqm			
18	Extra for providing edge moulding to 18mm thick marble stone counters, Vanities etc including machine polishing to edge to give high gloss finish etc. complete as per design approved by the engineer in charge.	65	Mtr			

No of corrections:-
No of overwrittings:-

Signature of Bidder

Sign of P-I-C.

Sl. No.	Item Description	Qty	Unit	Rate	Rate	Amount
				in figures	in words	
19	Supplying , fixing vitrified tile in flooring of size 600mm x600mm, 10mm thick water absorption less than 0.08% confirming to IS :15622 of approved colour & make (Euro/ Bell/Granamite/Naveen) at all heights laid over cement mortar 20mm thick of proportion (1 cement : 4 coarse sand). The joints shall be filled with cement slurry mixed with required pigment to match the colour of tile including cost includes all labour, material, Tools plants ,curing etc. complete in all respects as per direction of Engineer. Basic cost of tile should not less than Rs 60.00/sft	495	Sqm			
20	Supplying , fixing vitrified tile in skirting / dado of size 600mm x 600mm, 10mm thick water absorption less than 0.08% confirming to IS :15622 of approved colour & make (Euro/ Bell/Granamite/Naveen) at all heights laid over cement mortar 12mm thick of proportion (1 cement : 3 coarse sand). The joints shall be filled with cement slurry mixed with required pigment to match the colour of tile including cost includes all labour, material, Tools plants ,curing etc. complete in all respects as per direction of Engineer.Basic cost of tile should not less than Rs 60.00/sft	28	Sqm			
21	Inside plaster:- Providing 20mm thick cement plaster at any location in cement sand mortar proportion (1 cement: 6 coarse sand) after racking out of joints, roughening the concrete surface, filling porturated surface,fixing wiremesh 200mm wide in case of concrete & brick work joints such that half on each surace fixed by help of nails cost includes of all materials, labour,lead, royalty, T & P, scaffolding, curing etc. complete in all respect as per the direction of Engineer.	735	Sqm.			

No of corrections:-
No of overwrittings:-

Signature of Bidder

Sign of P-I-C.

Sl. No.	Item Description	Qty	Unit	Rate in figures	Rate in words	Amount
22	Providing 10mm thick plaster at any location cement plaster in cement sand mortar in proportion (1 cement : 4 fine sand) to ceiling of roof, beams, columns , chajja, soffit of stair case etc. after roughening the surface by proper chisseling ,surface preparation, filling porturated surface etc. cost includes of all materials, labour,lead, royalty, T & P,scaffolding, curing etc. complete in all respect as per the direction of Engineer .	315	Sqm.			
23	External plaster:- Cement plaster in two coats-18mm CP in two coats under layer 12mm CP 1:5 (1 cement: 5 coarse sand) & top layer 6mm thick CP (1:3) (1cement : 3 coarse sand) at any location finished rough with sponge after racking out joints, roughening the concrete surface, filling porturated surface,fixing wiremesh 200mm wide in case of concrete & brick work joints such that half on each surace fixed by help of nails cost includes of all materials, labour,lead, royalty, T & P, scaffolding, curing, etc. complete in all respect as per the direction of Engineer . (Recron 3S @ 125gm / 50Kg of cement to be added for preparing cement mortar)	540	Sqm.			
24	Painting two and more coats at any location with Acrylic distemper of Asian/ Nerolac ,approved shade to get an even shade over plastered wall & ceilings over one coat of primer as per manufacturers specification at any location cost includes all material ,repairing cracks, scaffolding , lead,T&P etc. complete in all respect as per the direction of the Engineer . at all heights & any location, over old/ new work	2200	Sqm			

No of corrections:-
No of overwrittings:-

Signature of Bidder

Sign of P-I-C.

Sl. No.	Item Description	Qty	Unit	Rate in figures	Rate in words	Amount
25	Providing and applying acrylic wall putty (Birla/ Laticreate/ JK) (synthetic) - water based of Birla white or Nerolac make at any location over plastered surface to prepare the surface even and smooth complete including scaffolding, material, labour, tools plants, labour complete in all respects. at all heights. over old / new work	2200	Sqm			
26	Removing white or colour wash/ distemper/ water proofing cement paint by scrapping and sand papering and preparing the surface smooth including necessary repairs to scratches etc. complete.	1450	Sqm			
27	Finishing walls with textured exterior paint of required shade :- New work (two or more coats applied @ 3.28ltr/10sqm) over and including base coat of water proofing cement paint applied & 2.20kg/10sqm , at any location (as per manufacturer's specification) to give an even shade over plastered wall cost includes all material ,repairing cracks, scaffolding, lead, T&P, labour, curing etc., complete in all respect as per the direction of the Engineer.	950	Sqm			
28	Supplying and applying two coats of synthetic enamel paint over a coat of primer on old / new wood and or metal surface / plastered surface after through surface preparation where ever required as per direction of engineer or drawing.	120	Sqm			
29	Providing & fixing in position at any location 35 mm thick ISI marked factory made solid core block board flush door conforming to IS:2202, Part-1 hot pressed shutter of Greenply Industries Ltd./Aeon both side commercial with well matched teak 3 ply veneering with certical grains / cross bands and face veneers on both faces of shutter of approved make & quality bounded with phenol formal dehyde synthetic resin, leaping around complete as specified with lamination of 1 mm thick of approved shade /make					

No of corrections:-
No of overwrittings:-

Signature of Bidder

Sign of P-I-C.

Sl. No.	Item Description	Qty	Unit	Rate	Rate	Amount
				in figures	in words	
	& as directed cost includes of all hardware fitting like cylindrical lock (SS finish), , Door stopper, Door closer, Stainless steel hinges, tower bolt 300mm long etc. cost includes all material, labour, tools and plant , tax as per drawing and directed by engineer.					
29.1	New door	12	Sqm			
29.2	Taking out the existing door & stacking in proper place and providing & fixing new door as per the above specification.	23	Sqm			
30	Providing & fixing in position at any location well dressed naturally well seasoned sal wood of finished cross section (65mm x 125mm), rebated frame to door including 2 coats of hot bitumen applied to rear of frame in contact of masonry / concrete surface complete in all respects cost includes of MS holdfast 250mm long, making holes 150mm x150mm x150mm & filling with cement concrete (1:2:4) all materials, labour,lead, royalty,T & P etc. complete in all respect as per the direction of Engineer.	0.5	Cum			

No of corrections:-
No of overwrittings:-

Signature of Bidder

Sign of P-I-C.

Sl. No.	Item Description	Qty	Unit	Rate	Rate	Amount
				in figures	in words	
31	Providing, fitting and fixing fully glazed aluminium sliding windows (two track /fixed), at any location made out of polyster powder coated aluminium sections minimum thickness of polyster powder coating 50 micron (JINDAL/HINDALCO) confirming to IS- 733 & IS-1285 as per drawing, confirming to latest IS specification with necessary fittings, fixtures and hardwares like concealed locks , aluminium handles, etc., glazed with 5mm thick clear glass free from bubbles with sun reflective film, holes or any surface deformation, as per the drawing and design, and fixed to the walls or columns with lugs in cement concrete 1:2:4 cutting holes and making good to all damages, including filling gaps if any, between the frames walls/ columns, with appropriate sealant, including cost of all materials, labour, conveyance, taxes, royalties, scaffolding, sundries, tools and plants, etc., complete as per the direction of the Engineer.	30	Sqm			
32	Supplying & fixing M.S. grills at any location made of M.S. flat of size 25x 6mm , 20mm x 5mm & 16mm/ 12mm / 8mm square bar as per detailed drawing & design cleaning with sand paper the iron bubbles with painting two coats of synthetic enamel paint over two coats of zinc chromate / metal primer (approved make and shade) complete in all respects with all labour, material ,fabrication charge, lead etc. as per direction of Engineer.	940	Kg			

No of corrections:-
No of overwrittings:-

Signature of Bidder

Sign of P-I-C.

Sl. No.	Item Description	Qty	Unit	Rate in figures	Rate in words	Amount
33	Supplying, fitting and fixing of stair case railing; with top stainless steel 50mm dia 2mm thickness 316 grade circular pipe in hand railing. Balustrade of size 32mm dia & 2mm thick @ 0.90mtr. C/C mild steel powder coated pipe & bracing with mild steel pipe of size 25mm dia x 2mm in 3 rows as per approved design and specification, buffing, polishing etc with cost, conveyance, powder coating,taxes of all materials, labour, T&P etc. required for the complete in all respect. (Cost includes railing & balustrade) only length of railing will be taken for payment.	20	Mtr.			
34	Supplying & Fixing of 5mm thick glass with both side teak wood beading cost includes all material, labour, tax, scaffolding, at all heights & any location.	12	Sqm			
35	Providing and fixing circular cast iron box for ceiling fan clamp 140mm internal dia. 73mm height, 5mm thick rim, bottom and top lid of 1.5 mm thick M.S. sheet with its top surface hacked for proper bonding top lid shall be screwed into the cast iron box by means of 3.3mm dia. round headed screws, one lock at the corners. Clamp shall be made of 12mm dia M.S. bar bend to shape as per standard drawing.	26	No			
36	Providing & Laying screed concrete in proportion (1 cement :2 coarse sand :4 stone aggregate 6mm down size) 50mm thick in proper level , line at all heights & any location , compacting , curing ,all material, labour, scaffolding etc complete in all respects as per the direction of Engineer in charge, (Recron 3S added @ 125gm / 50kg of cement)	315	Sqm			

No of corrections:-
No of overwritings:-

Signature of Bidder

Sign of P-I-C.

Sl. No.	Item Description	Qty	Unit	Rate	Rate	Amount
				in figures	in words	
37	Providing & applying water proofing treatment to the roof slab at any location over a clean ,levelled surface free from loose foreign material, oil,grease etc. by help of wire bush, vaccum cleaner. Then mixing Dr FIXIT PIDIFIN 2K powder with liquid in ratio (2:1) by mechanical mixer to get a constitent mix. The surface to be moistened before application of DR.FIXIT PIDIFIN 2K . Apply the 1st coat of mixed DR. FIXIT PIDIFIN 2K on the surface & allow dry for 4-6 hrs @ 30 deg C. Then 2nd coat to be applied . cost includes all material, labour, scaffolding, curing, T&P etc. complete as per the direction of engineer. Pidicreate MPB will also be applied as per the manufacture's specification.	365	Sqm			
38	Fixing of existing collapsible gates including repairing, painting with two & more coats of enamel paint to get an even shade, cutting chase in wall/ columns , filling with cement concrete (1:2:4) , making good the damages caused to walls & floors.	28	Sqm			

No of corrections:-
No of overwrittings:-

Signature of Bidder

Sign of P-I-C.

Sl. No.	Item Description	Qty	Unit	Rate in figures	Rate in words	Amount
39	Providing and fixing natural anodized aluminium door,(frame and shutter) fabricated from extruded aluminium alloy section as per drawing, anodized to 15 microns in silver satin mat finish, members conforming to ISI mark, glazed using 6mm thick plain glass, including providing all necessary fittings, fixtures and handle, brass door lock, double acting floor spring, (shutter opening inside only)aluminium tower bolt, neoprine gasket, etc., as per drawing, and fixed to the walls or columns with lugs in cement concrete 1:2:4 cutting holes and mending good to all damages, including filling the gaps if any, between the frames and walls/columns, with appropriate sealant including cost of all materials, labour, conveyance, taxes, royalties, scaffolding, direction of the Engineer-in-charge.	31	Sqm			
40	6 mm cement plaster 1:3 (1 cement : 3 fine sand) Finished with a floating coat of neat cement and thick coat of lime wash on top of walls when dry for bearing of R.C.C slabs and beams.	40	Sqm			
41	Providing & aplying water proofing treatment at any location to the sunken slab over a clean surface free from loose foreign material,oil,grease etc. by help of wire bush, vaccum cleaner.Then wet the surface & allow the surface to dry. Then apply 1st coat of Dr FIXIT PROOFCOTE BLACK on the surface covering sufficient area & allow it to dry for 6 to 8hrs @ 30 deg C. Apply 2nd coat of Dr FIXIT PROOFCOTE BLACK in perpendicular direction to the 1st coat after drying of 1st coat. Sprinkle " Quartz sand " on the 2nd coat when it is wet ,then apply screed concrete (paid in separate item) to be provided. Cost includes all material ,labour,tax,lead,T&P etc. complete in all respects as per engineer.	25	Sqm			
TOTAL OF SECTION- B					Rs	
carried over to the " Abstract"						

No of corrections:-
No of overwrittings:-

Signature of Bidder

Sign of P-I-C.

Sl. No.	Item Description	Qty	Unit	Rate	Rate	Amount
				in figures	in words	
C	WATER SUPPLY & SANITATARY WORK					
	<u>General note- Whereever CP is mentioned it means Brass CP. All the PHD fittings are of Jaquar continental series/ Crabtree/ Parryware standard series.</u>					
1	Providing, Supplying & Fixing Indian type water closet I.S.I. Marked (confirming to IS : 7231) at all heights of (Parryware/ Cera) make with integral foot rest white vitrious ware with P / S trap (PVC) with 10.0 ltr capacity low level flushing cistern in white plastic manually controlled device (handle lever) of approved make /shade with all internal fitting. etc. with all fittings & fixtures complete including making good the damages . including cost of all materials, labour,tax, T&P, lead, royalty etc.complete in all respects as per direction of Engineer. White vitreous china orissa pattern WC pan size (580x440mm) with integral type footrest, 32mm dia flush pipe Eqv to- Cat no-2092 Orissa pan of Cera. & Prima, cat no 2690 , Flushing Cistern of Cera)	1	No			
2	Providing, Supplying & Fixing European type water closet (EWC) I.S.I. Marked (confirming to IS : 7231) at all heights of (Parryware/ Cera) make with seat & cover with P / S trap (PVC) with 10.0 ltr capacity low level flushing cistern in white plastic manually controlled device (handle lever) of approved make /shade with all internal fitting. etc. with all fittings & fixtures complete including making good the damages . including cost of all materials, labour,tax, T&P, lead, royalty etc.complete in all respects as per direction of Engineer. with 32mm dia flush pipe. (Eqv to Cat no-2080, Camelia EWC with "P" of Cera)	1	No			

No of corrections:-
No of overwrittings:-

Signature of Bidder

Sign of P-I-C.

Sl. No.	Item Description	Qty	Unit	Rate in figures	Rate in words	Amount
3	Providing and fixing one piece construction white vitreous china squatting plate with an integral longitudinal flushing pipe, white P.V.C. automatic flushing cistern, with fittings, standard size G.I. flush pipe for back and front flush with standard spreader pipes with fittings, G.I clamps and C.P. brass coupling complete including painting of fittings and cutting and making good the walls and floors etc. wherever required : Range of two squatting plates with 5 litre P.V.C. automatic flushing cistern.	1	No			
4	Providing and fixing white vitreous china flat back or wall corner type lipped front urinal basin of 430x260x350mm and 340x410x265mm sizes respectively with automatic flushing cistern with standard flush pipe and C.P. brass spreaders with brass unions and G.I clamps complete, including painting of fittings and brackets, cutting and making good the walls and floors wherever required : Range of two urinal basins with 5 litre white P.V.C. automatic flushing cistern.	1	No			
5	Providing & fixing Divisional Plate of Cat no- 5011 of Cera size 700 x 340x 120mm at any location and at all heights of crystal white colour to be fixed in wall including making good the damages including cost of all materials, labour, lead, tax, royalty etc. complete in all respects as per direction of Engineer.	2	No			
6	Providing & constructing urinal platform at all heights as per drawing in P.C.C. [1 cement: 3 coarse sand :6 graded stone aggregates] in proper slope using 20mm size graded crusher broken black hard granite chips cost includes shuttering as required & making good the damages as per drawing including cost of all materials, labour, lead, royalty, tax,curing etc.complete in all respects as per direction of Engineer. (0.50 mt bredth x 0.10mt height)	1	Sqm			

No of corrections:-
No of overwrittings:-

Signature of Bidder

Sign of P-I-C.

Sl. No.	Item Description	Qty	Unit	Rate in figures	Rate in words	Amount
7	Providing & fixing wash basin of size 550mm x 400mm white colour of Parryware (cat no C 0406 -Oxford of) at all heights & at any location including 15 mm dia Brass CP pillar cock long neck with aerator of Jaquar make, waste pipe (PVC) 25mm dia , CP waste coupling, connecting pipe & making good the damages as per drawing including cost of all materials, labour, lead, tax, royalty, T&P etc.complete in all respects as per direction of Engineer.	4	No			
8	Providing & fixing 6mm thick beveled edged sheet glass mirror of approved make with 6mm ply BWR grade ply backing & teak wood beading four sides ,CP mirror round clamps and making good the damages as per drawing including cost of all materials, labour, lead, T&P, tax,royalty etc.complete in all respects as per direction of Engineer	2	Sqm			
9	Providing & fixing Brass CP towel rail 24" of Jaquar make with necessary screws & making good the damages as per drawing including cost of all materials, labour, lead, royalty,tax,T&P etc.complete in all respects as per direction of Engineer.	4	No			
10	Providing & fixing Brass CP towel ring of Jaquar make with necessary screws & making good the damages as per drawing including cost of all materials, labour, lead, royalty,tax,T&P etc.complete in all respects as per direction of Engineer.	4	No			
11	Providing & fixing Brass CP robe hook double coat of Jaquar make with necessary screws & making good the damages as per drawing including cost of all materials, labour, lead, royalty,tax,T&P etc.complete in all respects as per direction of Engineer.	3	No			

No of corrections:-
No of overwrittings:-

Signature of Bidder

Sign of P-I-C.

Sl. No.	Item Description	Qty	Unit	Rate in figures	Rate in words	Amount
12	Providing & fixing Brass CP soap dish of Jaquar make with necessary screws & making good the damages as per drawing including cost of all materials, labour, lead, royalty,tax,T&P etc.complete in all respects as per direction of Engineer.	6	No			
13	Providing, fixing, jointing and testing in position the following medium class G.I. pipes conforming to IS:1239 cut to required lengths including all necessary fittings (All fittings shall conform to IS:1879 - part 1 to 10) and specials such as bends, tees, unions, reducers, flanges & plugs etc. Fixing at Terrace level/shaft supported by clamps, hangers etc, Threading, jointing, and making proper connections. Cutting or making hole in wall or floor or slab or column and making good the same. Also to included synthetic enamel paint as per is specified code shade to exposed pipes and brackets (fabricated supports / brackets to be GI hot deep galvanized).					
13.1	15mm dia	25	Mtr.			
13.2	25mm dia	15	Mtr			
13.3	32mm dia	15	Mtr			
13.4	40mm dia	25	Mtr			
13.5	50mm dia	30	Mtr			

No of corrections:-
No of overwrittings:-

Signature of Bidder

Sign of P-I-C.

Sl. No.	Item Description	Qty	Unit	Rate in figures	Rate in words	Amount
14	Providing & fixing gun metal horizontal / vertical non return valve (Leader make) conforming to IS 778 and tested to a pressure not less than 15 Kg/Sqcm, Including insulation rubber gasket, flanges, union, nuts, bolts & washers complete as required.					
14.1	50mm dia	1	No			
14.2	40mm dia	1	No			
15	Providing & Fixing 15mm dia brass CP standard plain/ angular type head stop cock of easy clean pattern of Jaquar make & making good the damages as per drawing including cost of all materials, labour,tax, lead,T&P, royalty etc.complete in all respects as per direction of Engineer	8	No			
16	Supplying & Fixing 15mm dia brass CP standard head bib cock long body of easy clean pattern of Jaquar make & making good the damages as per drawing including cost of all materials, labour,tax, T&P, lead, royalty etc.complete in all respects as per direction of Engineer	2	No			
17	Constructing brick masonry chamber (for housing valves) of brick work with bricks of crushing strength 75kgf/sqcm with cement mortar 1:5 (1 cement:5 fine sand) plastering internal face with cement mortar 1:3 (1 cement: 3 fine sand and rough plaster on outer face with a floating coat of neat cement. R.C.C top slab with medium duty C.I. manhole cover and frame of 600 mm dia. Including excavation, dewatering, refilling, watering, ramming and removing the surplus excavated material complete as required. (All sizes are clear internal sizes).					

No of corrections:-
No of overwrittings:-

Signature of Bidder

Sign of P-I-C.

Sl. No.	Item Description	Qty	Unit	Rate in figures	Rate in words	Amount
17.1	Size 900 x 800 x 1200 mm deep	3	No			
18	Supplying & laying of the PVC (SWR) and rigid PVC soil waste and vent pipes of Finolex /Prince/Supreme make of Selfit type/ring fit type as per requirement, on the wall surface and below ground and floor level. The rates includes fixing the pipes on wall surface with the PVC clips/clamps, all necessary fittings, including jointing with rubber ring, rubber lubricant, gasket for PVC (SWR) pipes / solvent cement for rigid PVC pipes to required length. Testing as per the specifications of manufacturer. Necessary earthwork in excavation and filling of the pipeline trenches, providing staging and scaffolding as per requirement at site all complete as per direction of Engineer-in-charge is inclusive in the rate. The rate also includes all labour, material, transportation, lead, lift, ascent, descent, taxes, royalty etc.excluding PCC below pipe & encasing the pipe if required & will be paid in separate item.					
18.1	160mm dia PVC (SWR) pipe class "A" (with wall thickness of 2.70mm to 3.20mm)	5	Mtr			
18.2	110 mm dia PVC (SWR) pipe Class 'A' (with wall thick of 2.20 mm to 2.70 mm)	25	Mtr			
18.3	75 mm dia PVC (SWR) Pipe Class 'A' (wall thickness of 1.8 mm to 2.20 mm).	20	Mtr			
19	Providing and laying 150 mm thick cement concrete 1:4:8 (1 cement:4 fine sand:8 graded stone aggregate 40mm nominal size) around the PVC SWR pipes including 150 mm thick bed concrete as per approved design.					
19.1	160mm dia	5	Mtr			

No of corrections:-
No of overwrittings:-

Signature of Bidder

Sign of P-I-C.

Sl. No.	Item Description	Qty	Unit	Rate in figures	Rate in words	Amount
19.2	110mm dia	5	Mtr			
20	Supplying and fixing of rigid PVC fittings of (Finolex / Prince/ Supreme make) in the pipe line both below and above wall/ground with all necessary fittings and earthwork in execution etc. complete as per manufacturer specification. The rate is inclusive of all labour, material, transportation lead, lift, ascent, descent, taxes, royalty etc.					
20.1	Nahani trap with jalli 110mm x 110mm PVC (SWR/Nabivi trap as per requirement).	3	No			
20.2	Nahani trap with jalli 110mm x 75mm PVC (SWR/Nabivi trap as per requirement).	3	No			
20.3	Multiple floor trap with jali 110mm	6	No			
21	Providing and fixing on wall face unplasticised PVC moulded fittings/ accessories for unplasticised PVC rain water pipes (Finolex/ Prince / Supreme) Class- A conforming to IS : 13592 (Type-A) including jointing with seal ring conforming to IS : 5382 leaving 10mm gap for thermal expansion.					
21.1	110mm dia	90	Mtr			
22	Providing and fixing square- mouth S.W. gully trap grade 'A' complete with C.I. grating brick masonry chamber with bricks of class designation 75 and water tight C.I. cover with frame of (300mm x 300 mm) size the weight of cover to be not less than 4.50 kg and frame to be not less than 2.70 kg as per standard design. Including necessary excavation, dewatering, refilling, watering, ramming and removing the surplus excavated material and making good the same complete as required.					
22.1	100mm x 100mm size P type	12	No			

No of corrections:-
No of overwritings:-

Signature of Bidder

Sign of P-I-C.

Sl. No.	Item Description	Qty	Unit	Rate in figures	Rate in words	Amount
23	Constructing brick masonry inspection chamber of the following sizes in brick work of class 75 in cement mortar 1:4 (1 cement: 4 fine sand), R.C.C. top slab 150mm thick with 1:2:4 mix (1cement : 2 coarse sand : 4 graded stone aggregate 20mm. nominal size), foundation concrete 200mm thick 1:4:8 mix (1 cement : 4 coarse sand:4 graded stone aggregate 40 mm nominal size), inside plastering 12mm thick 1:3 (1 cement : 3 coarse sand) finished with floating coat of neat cement & making channel in cement concrete 1:2:4 (1 cement : 2 coarse sand : 4 graded stone aggregate 20mm nominal size) finished with a floating coat of neat cement , proper water proofing to ensure no ground water seepage in the manhole, PVC foot rests at 300 mm spacing, benching , including necessary centering and shuttering, reinforcement, excavation in all kinds of soil, back filling , dewatering, curing,watering, ramming and removing the surplus excavated earth, making good the same complete as required.					
23.1	Internal size (90x 80) cm and 60cm deep including CI cover with frame (light duty) 455mm x 610mm internal dimensions total weight of cover & frame to be not less than 38kg (frame-23kg , frame -15kg)	2	No			
24	Providing and fixing in position Sintex water tanks (ISI marked) of following capacity complete in all respect with providing and making of inlet and outlet connections, overflow pipes with of 50mm dia PTMT ball cock and necessary accessories etc. complete in all respect.					
24.1	2500 litre	2	No			
	TOTAL OF SECTION-C				Rs	
	carried over to the " Abstract"					

No of corrections:-
No of overwrittings:-

Signature of Bidder

Sign of P-I-C.

Sl. No.	Item Description	Qty	Unit	Rate in figures	Rate in words	Amount
D	SURFACE DRAIN					
1	Earth work in excavation in all type of soil , morrum, hard, compacted or soft rock, mica schist quartz etc. in foundation of structure, sewer line, drain pits, etc. to required level and grade and dressing complete as per the specification and direction of the engineers in both dry and wet condition including necessary pumping, bailing out of water, slush removal etc. and transporting the excavated material to soil dump /fill area/ excavated pit with a lead of 200mtr. at all heights and descent including dozing leveling at site of filing all as directed by the engineer, all tools,plants, and labour complete, Authorised working space benching and sick slope for the excavation will be measured and paid under this items upto 3mtr depth below finished Ground Level.	50	Cum			
2	Back filling in all positions and height and descent in foundation pits, pipe trench sewer line around foundation and structure in plinth etc. with approved excavated material obtained from a lead of 200mtr including reclaiming from spoils heaps at all height or reclaiming from dumps at all depth cost includes transporting, depositing, filling, in layers of 200mm thick dressing watering and ramming complete with tools , plant & labour.	30	Cum			
3	Plinth filling in layers of 150mm thick good quality river sand including watering and consolidating by mechanical means as per direction of Engineer.	10	Cum			
4	Concrete work :- Supplying, laying and compacting plain cement concrete of following graded aggregate and at all heights and depth above and below finished ground level to required levels slope etc. including curing but excluding the cost of shuttering all as per drawing and direction of engineer, with all material, tools plant and labour.					
4.1	Below finished ground level 1:4:8 with 40mm graded aggregate.	13	Cum			

No of corrections:-
No of overwrittings:-

Signature of Bidder

Sign of P-I-C.

Sl. No.	Item Description	Qty	Unit	Rate in figures	Rate in words	Amount
5	Masonry work:- Supplying and construction brick work using best quality locally available bricks of compressive strength not less than 75 Kgf/ sqcm as defined in IS 1077 in cement sand mortar (1:6) in foundation, main hole duct drain etc. including fial cutting, wastage, bounding, plumbing line level, flushing , racking joint, scaffolding and curing all as per drg. and as per direction of the engineer with, all material tools plant, labour complete.	35	Cum			
6	Providing 15 mm thick cement plaster with neat cement punning in cement sand mortar in proporation (1cement: 6 coarse sand) after racking out of joints cost includes of all materials, labour,lead, royalty, T & P, curing etc. complete in all respect as per the direction of Engineer.	230	Sqm.			
7	Concrete work :- Supplying, laying and compacting plain cement concrete of following graded aggregate in all foundation, floor, roof screening etc. and at all heights and depth above and below finished ground level to required levels slope etc. including curing but excluding the cost of shuttering all as per drawing and direction of engineer, with all material, tools plant and labour.					
7.1	Below finished ground level 1:2:4 with 12.5mm to 6mm graded aggregate.	8	Cum			
8	Providing & laying 100mm thk precast ,precured R.C.C. slab (1cement: 1 .5 coarse sand : 3 graded coarse trap aggregates 12.5 mm nominal size) including finishing top & sides with cement plaster 6mm thick , Tor steel (8mm @ 125mm c/c both ways) , shuttering cost of all materials, labour, fixing with cement mortar (1cement:4 fine sand) sealing the joints including pointing in cement mortar (1 cement : 2 sand) concreting by suitable means and watering for curing etc. complete in all respects as per the direction of Engineer.	165	Sqm			
TOTAL OF SECTION-D						Rs
carried over to the " Abstract"						

No of corrections:-
No of overwrittings:-

Signature of Bidder

Sign of P-I-C.

Sl. No.	Item Description	Qty	Unit	Rate in figures	Rate in words	Amount
E	SITE DEVELOPMENT, PATHWAY & PAVING					
1	Preparation of subgrade by excavating earth to an average of 22.5 cm depth, dressing to camber and consolidating with road roller including making good the undulations etc. and disposal of surplus earth lead upto 50m.	100	Sqm			
2	Consolidation of subgrade with power road roller of 8 to 12 ton capacity including making good the undulations etc. with earth or quarry spoils etc. and rerolling the subgrade.	100	Sqm			
3	Concrete work :- Supplying, laying and compacting plain cement concrete of following graded trap aggregate in all foundation, floor, roof screening etc. and at all heights and depth above and below finished ground level to required levels slope etc. including curing but excluding the cost of shuttering all as per drawing and direction of engineer, with all material, tools plant and labour.					
3.1	Above finished ground level 1:4:8 with 40mm graded aggregate.& compacting with surface vibrator.	12	Cum			
4	Providing and laying C.C. pavement of mix (1: 1.25: 2.5) concrete . The concrete shall be laid and finished with screed board vibrator and finally finished by floating, brooming with wire brush etc. complete as per specifications and directions of Engineer-in-charge. (Cost includes the panel shuttering work) (Recron 3S @ 125gm to be added 50Kg of cement) Payment will be made after producing invoice of the polyster construction fibre.	10	Cum			

No of corrections:-
No of overwrittings:-

Signature of Bidder

Sign of P-I-C.

Sl. No.	Item Description	Qty	Unit	Rate in figures	Rate in words	Amount
5	Supplying, loading,unloading transporting , straightening,decoiling, cutting, bending,cranking, tack welding as necessary placing and fixing in position steel reinforcement including angle /pins provided for approved welded joints at all level above and below finished G.L. for RCC and precast RCC work including supplying approved 20 SW annealed black binding wire, covel block etc. including all as per drg. and direction of engineer all material,tools plants and labour complete.High yield strength deformed bars of Grade Fe 500 of all diameters of cold twisted steel / TMT of TATA/ SAIL.	1	M.T			
6	Providing & Fixing premoulded joint filler in expansion joints. 18mm thick 15cm deep including cost of material, labour for fixing etc.complete.	45	Mtr			
7	Providing and laying at or near ground level factory made kerb stone of (Mitco/ Dimko/ Kreative /APMV) make & approved size in position to the required line, level and curvature jointed with cement mortar 1:3(1 cement: 3 coarse sand) including making joints with or without grooves (thickness of joints except at sharp curve shall not to more than 5mm) including making drainage opening wherever required complete etc.as per direction of Engineer-in-charge (length of finished kerb edging shall be measured for payment). (Precast C.C. kerb stone shall be approved by Engineer-in-charge). Size 300mm x 250mm x 150mm	65	Mtr			
8	Providing and laying 60mm thick factory made cement concrete interlocking paver block of (Mitco/ Dimko/ Kreative /APMV/Spectra) make and of approved size and design/ shape laid in required colour and pattern over and including 50mm thick compacted bed of course sand, filling the joints with coarse sand etc. all complete as per the direction of Engineer-incharge.	35	Sqm			
TOTAL OF SECTION-E					Rs	
carried over to the " Abstract"						

No of corrections:-
No of overwrittings:-

Signature of Bidder

Sign of P-I-C.

Sl. No.	Item Description	Qty	Unit	Rate	Rate	Amount
				in figures	in words	
F	LANDSCAPING , ABORICULTURE					
1	Trenching in ordinary soil upto a depth of 60cm including removal and stacking of servicable material and then disposing of by spreading and neatly levelling with in a lead of 50mt and making up the treanched area to proper levels by filling with earth or earth mixed with sludge or / and manure before and after flooding trench with water (excluding cost of imported earth , sludge or manure)	250	Cum			
2	Surface dressing of the ground including removing vegetation and in-equalities not exceeding 15 cm deep and disposal of rubbish, lead upto 50 m and lift upto 1.5 m.	18	100Sqm			
3	Providing grass lawns with "Doob" grass including watering & maintenance of the lawn for 30days or more till the grass forms a thick lawn free from weeds and fit for mowing including supplying of good earth if needed (the good earth shall be paid separately) cost includes all material, labour, lead, royalty complete in all respects as per the direction of Engineer-in-charge . In rows 5cm apart in either direction.	150	Sqm			
4	Providing grass lawns with "Australian grass" including watering & maintenance of the lawn for 30days or more till the grass forms a thick lawn free from weeds and fit for mowing including supplying of good earth if needed (the good earth shall be paid separately) cost includes all material, labour, lead, royalty complete in all respects as per the direction of Engineer-in-charge . In rows 5cm apart in either direction.	300	Sqm			
5	Supply of manure at site cost includes all material , T&P, Lead, royalty complete in all respects as per the direction of Engineer-in-charge . (manure measured in stacks will be reduced by 8% for payment) screened through sieve of IS designation 16mm	50	Cum			

No of corrections:-
No of overwrittings:-

Signature of Bidder

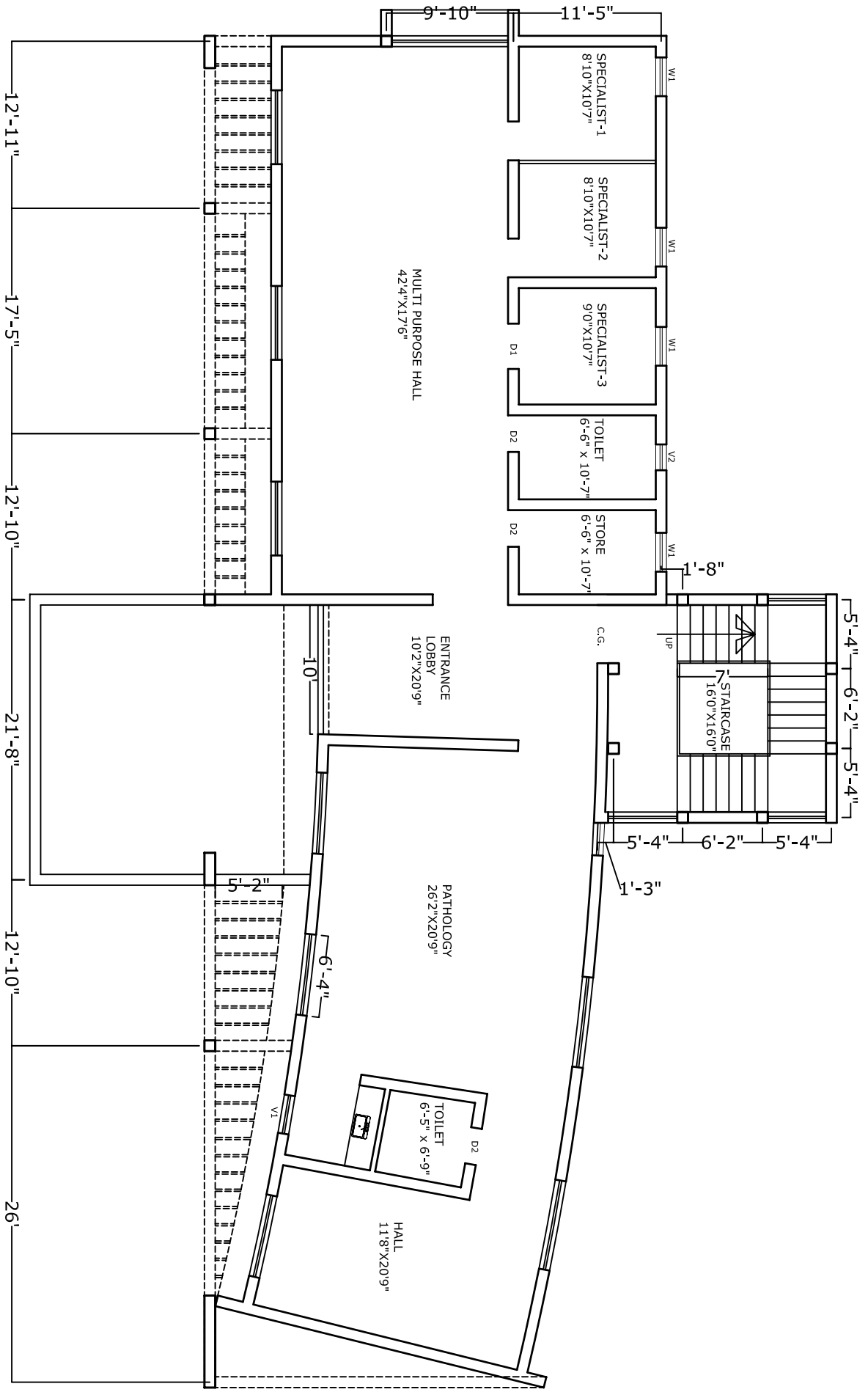
Sign of P-I-C.

Sl. No.	Item Description	Qty	Unit	Rate in figures	Rate in words	Amount
6	Supply of good earth at site cost includes all material , T&P, Lead, royalty complete in all respects as per the direction of Engineer-in-charge . (earth measured in stacks will be reduced by 20% for payment)	50	Cum			
7	Mixing, filling & spreading of good earth mixed with manure cost includes ,labour, T&P, Lead complete in all respects as per the direction of Engineer-in-charge .	100	Cum			
8	Supplying & spreading compost cost includes all material ,labour, T&P, Lead, royalty complete in all respects as per the direction of Engineer-in-charge .	50	Cum			
9	Digging & Filling of pits (2'6" x 2'6" x2'6") with good garden soil & decomposed cowdung manure (1:1) after mixing properly. cost includes all material ,labour, T&P, Lead, royalty complete in all respects as per the direction of Engineer-in-charge .	35	No.			
10	Supplying of ornamental plants , planting, applying fertilisers , pesticides, fungicides, weeding,watering as required.	35	No.			
11	Collection of good shaped weathered rock from river bed & placing in position cost includes material,labour,lead,royalty etc. complete in all respects as per direction of Engg-in-charge.	8	Cum			
12	Edging with bricks laid dry length wise including excavation, refilling, consolidating with hand packing and spreading neatly surplus earth within a lead of 50mtr, Bricks of 75 class designation	185	Mtr			
	TOTAL OF SECTION-F				Rs	
	carried over to the " Abstract"					

No of corrections:-
No of overwrittings:-

Signature of Bidder

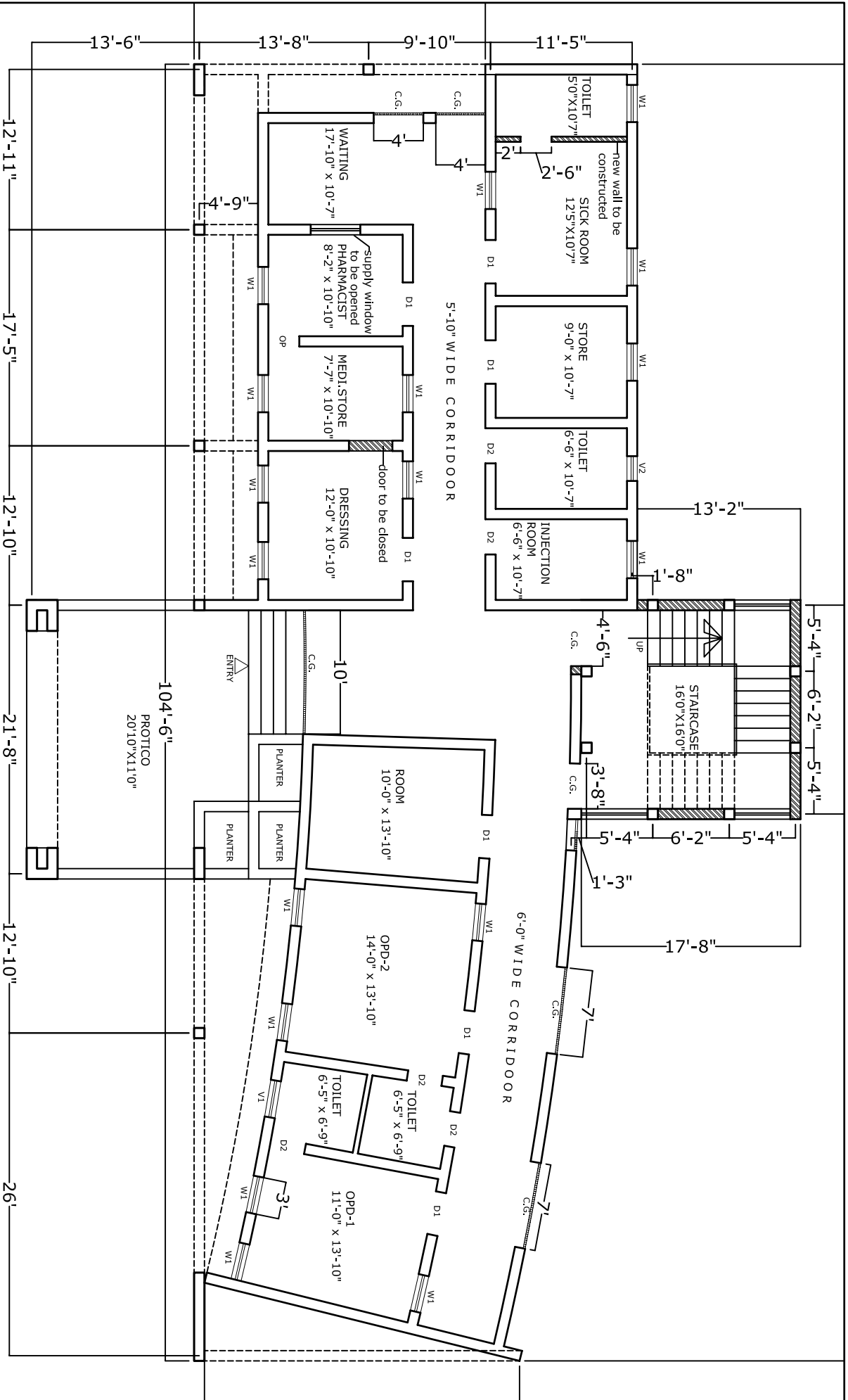
Sign of P-I-C.



FIRST FLOOR PLAN

PROPOSED EXTENSION TO THE HEALTH CENTRE OF N I T ROURKELA

ARCHITECT		CONSULTANT		CONTENTS	
D.K.PARIDA REGD NO. CA/94/17260		SPACE ARCH ARCHITECTS:ENGINEER:PLANNER 205,JAYADEV VIHAR, BHUBANESWAR		FIRST FLOOR PLAN	
		SCALE		SHEET NO. 003	
				DATE:	



GROUND FLOOR PLAN

PROPOSED EXTENSION TO THE HEALTH CENTRE OF N I T ROURKELA

ARCHITECT

CONSULTANT

CONTENTS

GROUND FLOOR PLAN

SCALE

SHEET NO. DATE:

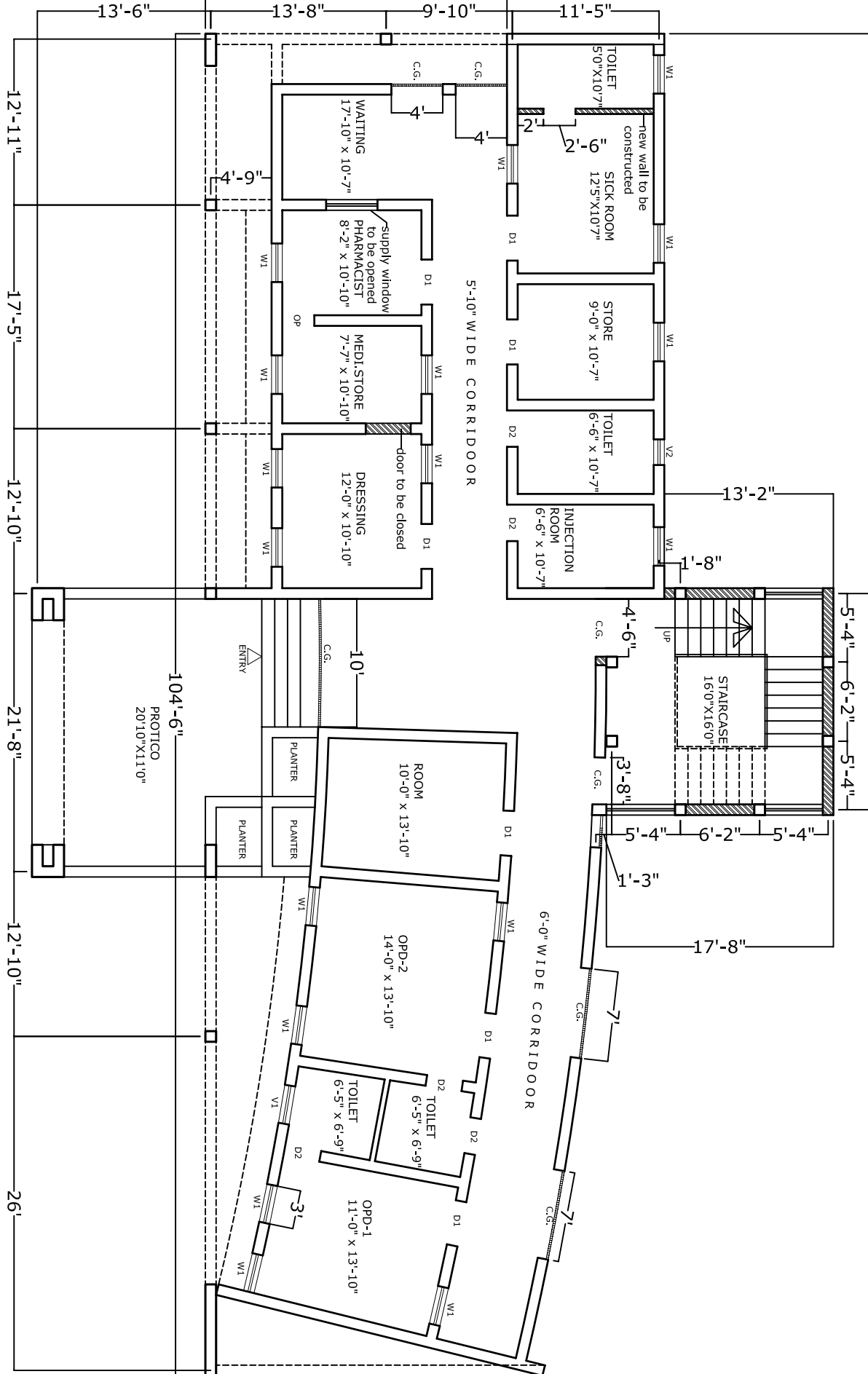
D.K.PARIDA
REGD NO. CA/94/17260

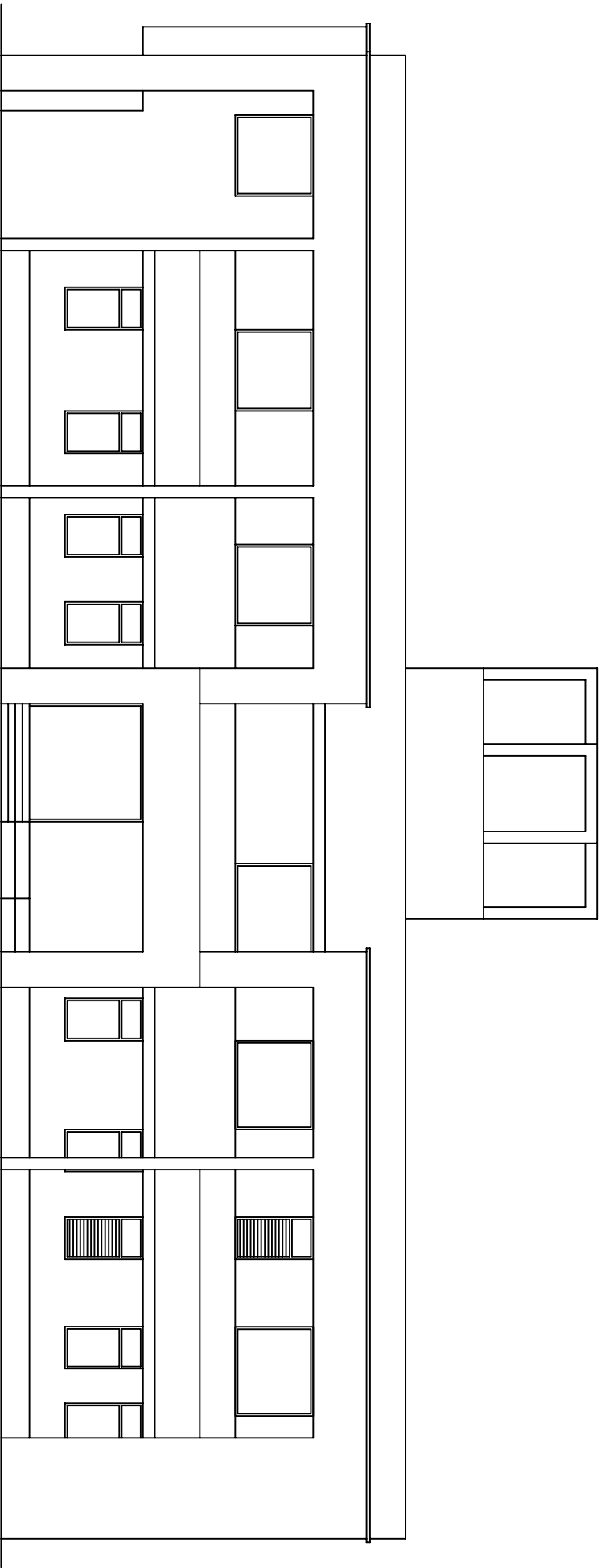


104'-6"
PROTICO
20'10"X11'0"


6'-0" WIDE CORRIDOR

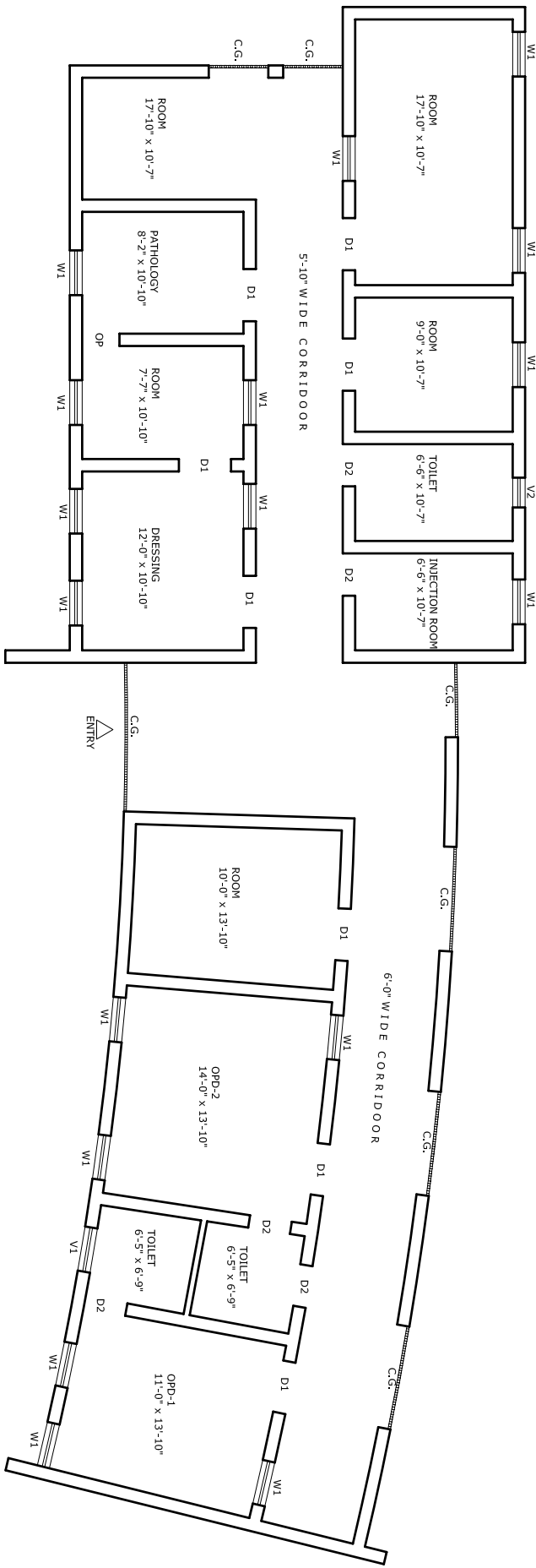
5'-10" WIDE CORRIDOR





FRONT ELEVATION

PROPOSED EXTENSION TO THE HEALTH CENTRE OF N I T ROURKELA	
ARCHITECT	CONSULTANT
D.K.PARIDA REGD NO. CA/94/17260	 SPACE ARCH ARCHITECTS:ENGINEER:PLANNER 205,JAYDEV VIHAR, BHUBANESWAR
CONTENTS	SCALE
FRONT ELEVATION	SHEET NO. 004
	DATE:



PROPOSED EXTENSION TO THE HEALTH CENTRE OF N I T ROURKELA

ARCHITECT

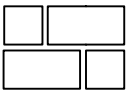
CONSULTANT

CONTENTS

EXISTING GR FLOOR PLAN

SCALE

D.K.PARIDA
REGD NO. CA/94/17260



SPACE ARCH
ARCHITECTS:ENGINEER:PLANNER
205, JAYADEV VIHAR, BHUBANESWAR

SHEET NO.
001

DATE: